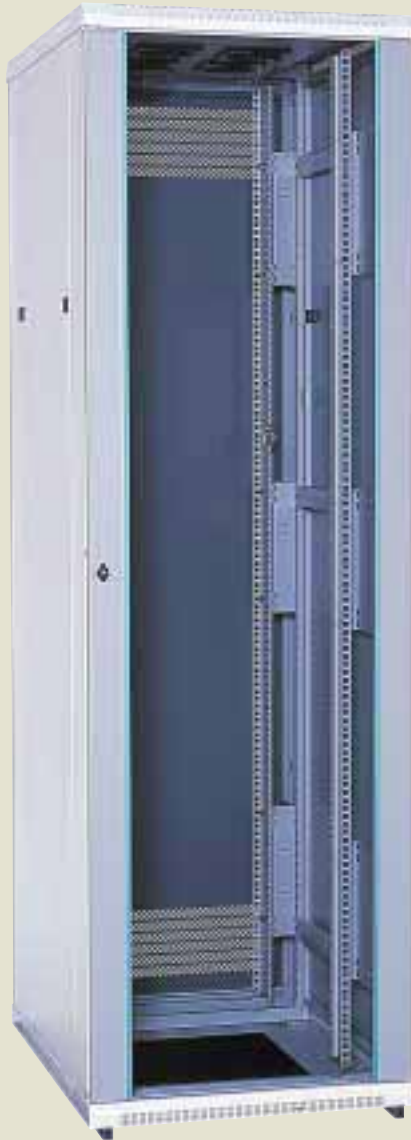


NETWORKING CABINETS

MR 35 Series



(shown with glass door)

The new **MR 35 Series** Cabinet is a multi-practice cabinet. This cabinet won an Industrie Forum Design Award in Hannover for its leading ground breaking approach to aesthetics and functionality. The multi-practice design of the product allows for combinations of 19", metric and the wider ETSI standard equipment to be installed into the same rack. The ability of the cabinet to accept equipment and systems designed to the new ETSI standard **builds future proofing** into your installations.

- Multi-practice - 19", metric or ETSI (European Telecommunications Standards Institute).
- Glass or metal front door options
- Supplied fully assembled and configured with accessories or in configured kit form.
- Wide range of accessories - see accessories information table at rear of catalogue.

FEATURES

- Lockable front and rear door of toughened tinted glass
- Adjustable 19", metric or ETSI panel mounts as standard
- Cable entry access panels at top and bottom
- Side panels with slam latches
- All-round accessibility
- Strong construction
- Optional drop-in fan trays fit within the top cover
- Extra space at front and rear for cable management
- 19" panel mounting can be centralised or offset

STANDARDS

- DIN 41494, part 7
- DIN 41491, part 1
- EN 60950
- VDE 0100
- IEC 297-2
- ETSI 300 119-2

DIMENSIONS

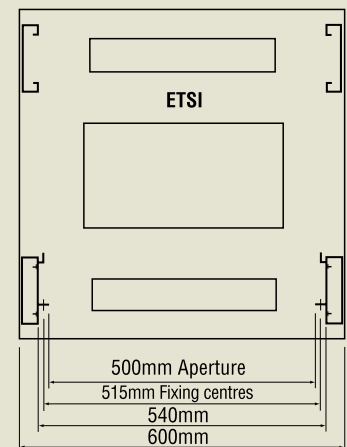
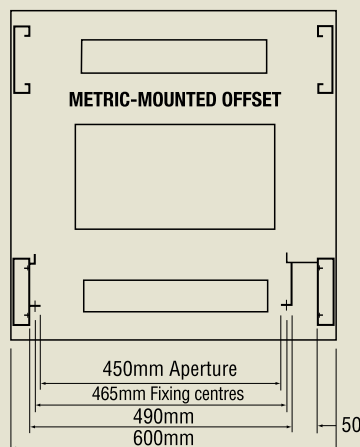
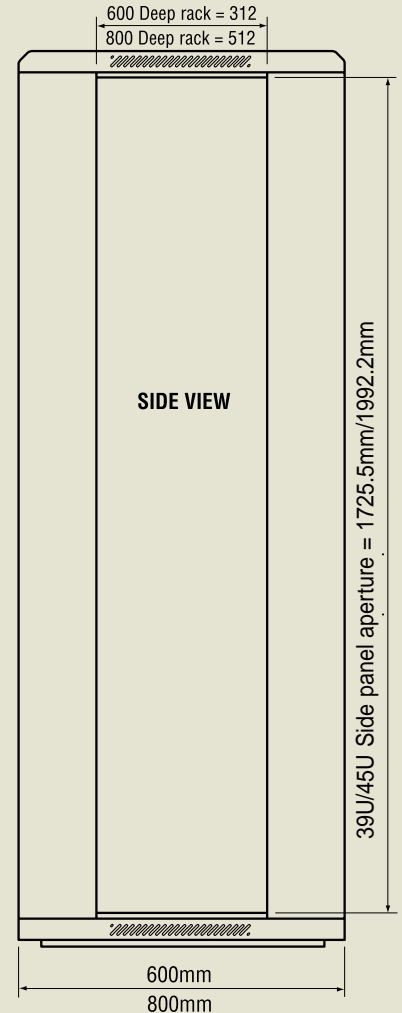
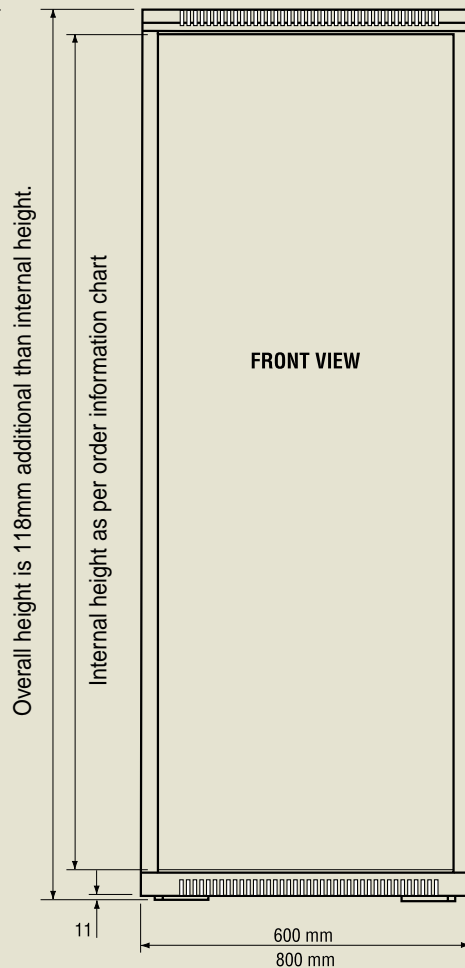
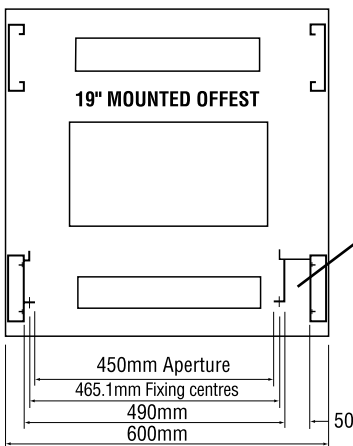
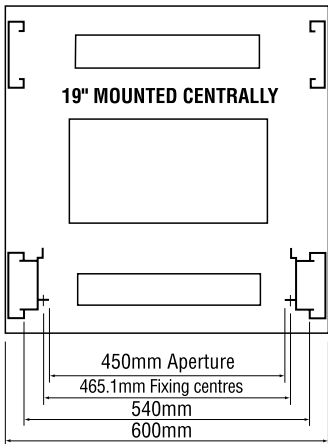
- Heights 27U, 32U, 39U, 45U (useable)
- Widths 600 mm, 800 mm (overall)
- Depths 600 mm, 800 mm (overall)

MATERIAL & FINISH

- Panel made of steel, powder coated, light grey (RAL 7035)
- Frame made of CRCA steel, powder coated, deep grey (RAL 7037)

MR 35 Series

The MR 35 series of cabinets are designed to accommodate ETSI standard equipment which are 50mm wider than 19"/metric products. This extra 50mm gives a distinct advantage when fitting 19" or metric equipment in that the extra 50mm can be utilised for proper cable management. This cabling space can be equally split either side of the 19"/metric equipment, or offset to one side only, therefore providing one large cabling channel down the right or left hand side of the panel mounts. This is shown in the two diagrams below.



NETWORKING CABINETS

MR 35 Series

FULL WIDTH PANEL MOUNTING SUPPORT KIT

These fit between the vertical picture frame and are used to support Offset 19", offset metric and ETSI panel mounts. They allow positioning of the panel mounts anywhere from the front to the rear of the cabinet. These kits are required for Offset panel mounts. Two kits are required for ETSI panel mounts.

Part No. MRA-87-3101 (600D)

Part No. MRA-87-3102 (800D)

CENTRALISING MOUNTING SUPPORT KIT

These fit between the vertical picture frame and are used to support centrally mounted 19", metric panel mounts and cable reducing channels on 800mm wide racks. They allow positioning of the panel mounts anywhere from the front to the rear of the cabinet.

Part No. MRA-87-3103 (600D)

Part No. MRA-87-3104 (800D)

OFFSET PANEL MOUNTING SUPPORT CHANNEL KIT

Supplied in pairs, these brackets allow the relevant 19" or metric panel mounts to be set either to the left or right of the rack and positioned anywhere from the front to rear.

Part No. MRA-87-3105

FLAT PANEL MOUNT SUPPORT BRACKET KIT

Used to support ETSI (metric) panel mounting angles. Made from 1,5mm thick steel and painted pale grey RAL 7035. Supplied as a pair.

Part No. MRA-87-3106

CENTRAL PANEL MOUNTING SUPPORT BRACKET KIT

Used when panel mounting angles are required to fit centrally within a 600 wide rack. They must also be used within 800 wide racks in conjunction with cable reducing channels to achieve 19" or metric mounting. The kit can be used in conjunction with 19" and metric panel mounting angles which need to be ordered separately. Made from 1,5mm thick steel and finished in pale grey RAL 7035. Supplied as a pair.

Part No. MRA-87-3107

ADJUSTABLE METRIC PANEL MOUNTING ANGLES

Supplied in pairs they provide, (when used with the appropriate panel mount support brackets), metric or ETSI (500mm) equipment mounting.

Part No. MRA-87-3139 (39U)

Part No. MRA-87-3145 (45U)

ADJUSTABLE 19" PANEL MOUNTING ANGLES

Used for 19" standards applications and supplied as a pair. The panel mounts can have an infinite depth adjustment if fitted to the mounting supports. Made from 2mm thick steel and finished in pale grey RAL 7035.

Part No. MRA-87-3039 (39U)

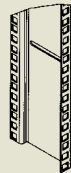
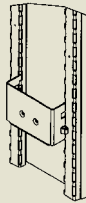
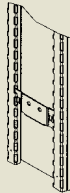
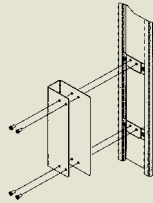
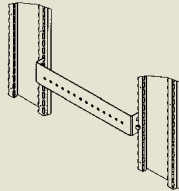
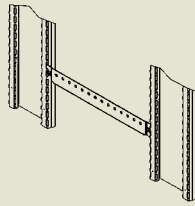
Part No. MRA-87-3045 (45U)

CABLE REDUCING CHANNELS

Used within 800 wide racks when panel mounting angles are required. When 19" and metric panel mounting angles are to be used the cable reducing channels are used in conjunction with central panel mounting support bracket kits. When ETSI mounting is to be used the cable reducing channels are used in conjunction with flat panel mount support bracket kits. Panel mounting angles need to be ordered separately.

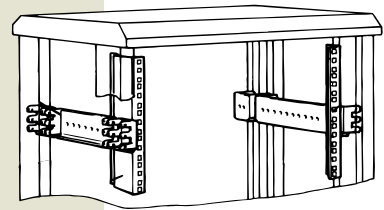
Part No. MRA-87-3339 (39U)

Part No. MRA-87-3345 (45U)

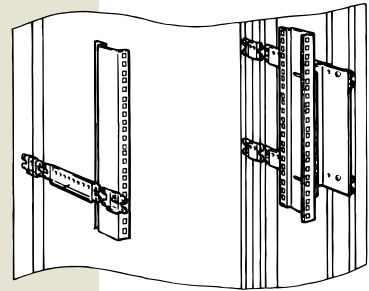


PANEL MOUNTING SYSTEMS

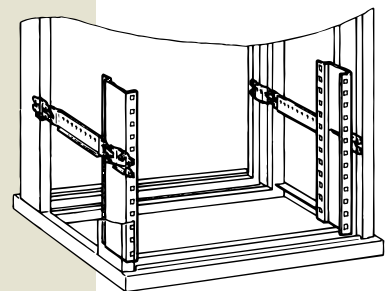
The three different mounting methods are achieved by using different sized brackets for 19" and Metric to either offset or centralise. The ETSI mounting requires no brackets and utilises the full width of the opening size of the cabinet. There is still room on either side to run cabling.



19" OR METRIC CENTRAL MOUNTING



19" OR METRIC OFFSET MOUNTING



ETSI MOUNTING



MR 35 Series

SCOPE OF SUPPLY

- Basic frame
- Side panels with slam latches
- Top cover (supplied plain or with cut-out for fan tray)
- Front and rear 19" mounting angles
- Adjustable feet
- Glass front door
- Steel rear door

OPTIONAL ACCESSORIES

- Lifting eye kit
- Fan tray assembly kit - 600D (2 fans)
- Fan tray assembly kit - 800D (4 fans)
- Castor kit, set of four
- Bolt down bracket kit
- Heavy duty chassis plate - 600D
- Heavy duty chassis plate - 800D
- For a full range of accessories see Page 14

ACCESSORIES ORDER INFORMATION

| Product | Order Code |
|------------------------------|----------------|
| Fan Tray Kit - 600d (2 Fans) | MRA-87-3080-04 |
| Fan Tray Kit - 800d (4 Fans) | MRA-87-3080-05 |
| Castor Kit | MRA-86-1754 |
| Chassis Tray - 600d (254mm) | MRA-86-1711 |
| Chassis Tray - 800d (454mm) | MRA-86-1712 |

For a full range of accessories turn to page 14

* The product codes below comprise our standard off the shelf configurations. If you require non standard specifications or mounting other than '19" offset to the left' please make it clear when ordering or requesting a quote.

See height conversion chart on page 19 for metric measurements

| ORDER INFORMATION | (glass front door is standard) | |
|-------------------|--|------------------------|
| Dimension | Order Code | Order Code |
| | Plain Metal Rear Door | Vented Metal Rear Door |
| 27U x 600 x 600 | MR35-6060-27-P | MR35-6060-27-V |
| 27U x 600 x 800 | MR35-6080-27-P | MR35-6080-27-V |
| 32U x 600 x 600 | MR35-6060-32-P | MR35-6060-32-V |
| 32U x 600 x 800 | MR35-6080-32-P | MR35-6080-32-V |
| 39U x 600 x 600 | MR35-6060-39-P | MR35-6060-39-V |
| 39U x 600 x 800 | MR35-6080-39-P | MR35-6080-39-V |
| 45U x 600 x 600 | MR35-6060-45-P | MR35-6060-45-V |
| 45U x 600 x 800 | MR35-6080-45-P | MR35-6080-45-V |
| 45U x 800 x 800 | MR35-8080-45-P | |
| 45U x 800 x 800 | MR35-8080-45-P-19 (800w with 19" Mounting) | |