

NEW High Performance Amplifier for Brushless Motors

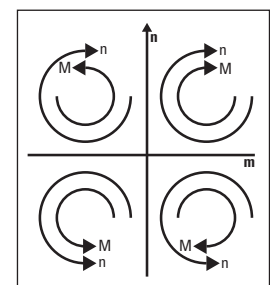
EBL-H-50-03 Amplifier (Hall Sensor)

✓ ROHS compliant

Specially engineered for Portescap high performance Brushless motors, the EBL driver is ideal for applications where efficiency, high acceleration or safety features are key. Clearly identified inputs and outputs allow for easy startup.

Flexibility: Fully programmable features allow for maximum performance in each specific application. With a broad supply voltage range, this driver is capable of controlling the smaller 13 mm BLDC motors to the larger 30 mm motors.

Protection: Thermal, short and over current protection are included. An optional feature allows for current limitation at start up to protect surrounding equipment (i.e: the life of a battery pack in a medical respirator will be greatly improved). The internal current ripple control minimizes increases in motor heat.



4 quadrant operations

Electrical Characteristics

Supply Voltage	5.5 - 50 V
Current Output	3 / 12 Amps
Speed Range	90,000 (2 poles)

PortescapTM
A Danaher Motion Company

Electrical Characteristic:

Supply Voltage (Ripple <5%)	5.5 - 50 Volts
Maximum current output	12 Amps
Continuous current output	3 Amps
Speed range (2 poles)	90,000 Rpm

Regulation:

PI speed regulation (fully programmable)

Inputs:

Analog / PWM voltage control	0-5 Volts (resolution: 256steps) / 10kHz
Enable (Power Bridge):	0-5 Volts logic (OFF= 0V , ON= 5V)
Direction:	0-5 Volts logic (CCW= 0V, CW= 5 V)
Stop:	Analog input SPD set to low level
External temperature sensor:	PTC resistor

Outputs:

Speed output:	Digital, 1 Pulse Per Revolution (0-5V)
Hall Supply voltage:	5V / 20mA

Protection Features:

Temperature monitoring (Power Bridge)	90°C
Current limitation (fully programmable)	default 12 Amps
Voltage limitation (Power Off Bridge):	50 V maximum

Environment (temperature/ Humidity):

Ambient Operation temperature:	-10°C +60°C
Storage Temperature:	-40°C +100°C
Humidity range:	80% maximum

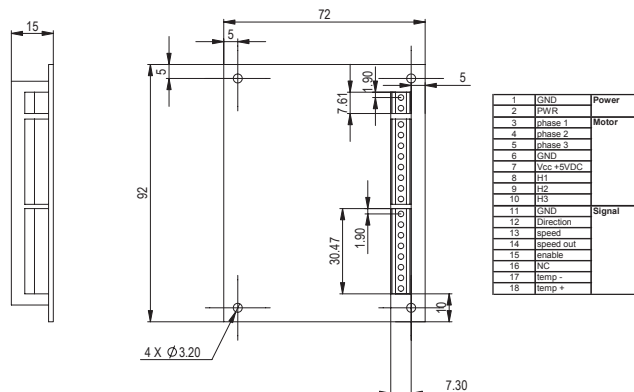
Mechanical Data:

Dimensions (LxWxH)	92x72x16 mm
Weight:	45 grams

Connection:

Wire cross section:	AWG 26 - 16
	0.14 –1.5 mm ²
Pitch	3.81 mm

Dimensions:



USA, CANADA or MEXICO

Phone: 1-610-235-5499
Fax: 1-610-696-4294

EUROPE

Phone: +41 (0) 32 925 61 11
Fax: +41 (0) 32 925 65 96

CHINA

Phone: +86 10 6515 0260
Fax: +86 10 6515 0263

JAPAN

Phone: +81-3-6222-1051
Fax: +81-3-6222-1055